

ID: QA34237 | Access Levels: Everyone

CCW: Using project from Sample Code Library

Document ID QA34237

Published Date 10/14/2022

Summary

CCW: Using project from Sample Code Library

Question

How do I use project downloaded from Rockwell Automation Sample Code Library with Connected Components Workbench?

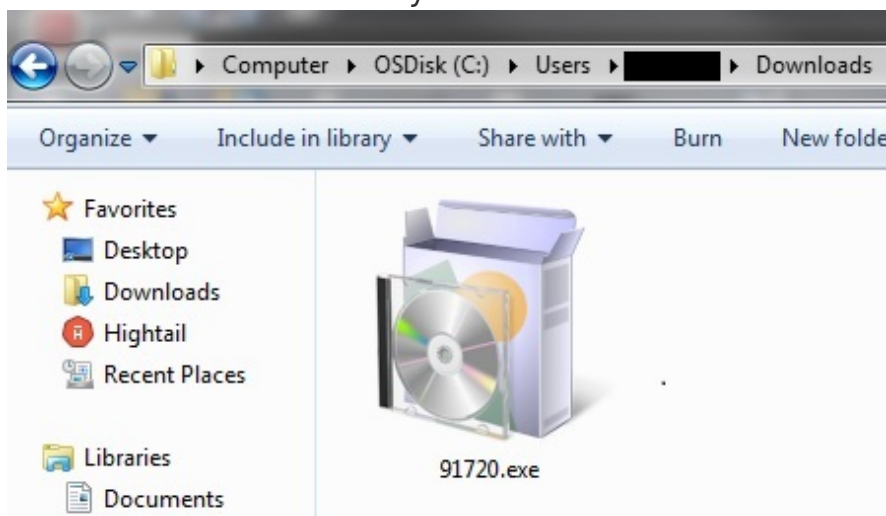
Environment

Connected Components Workbench

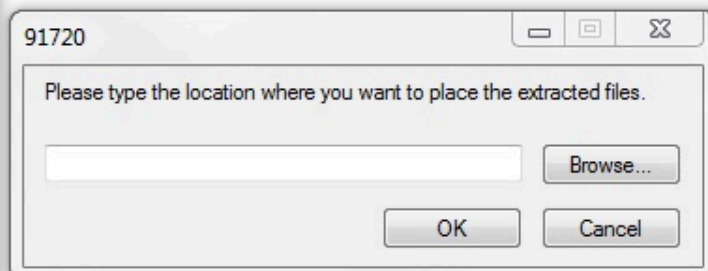
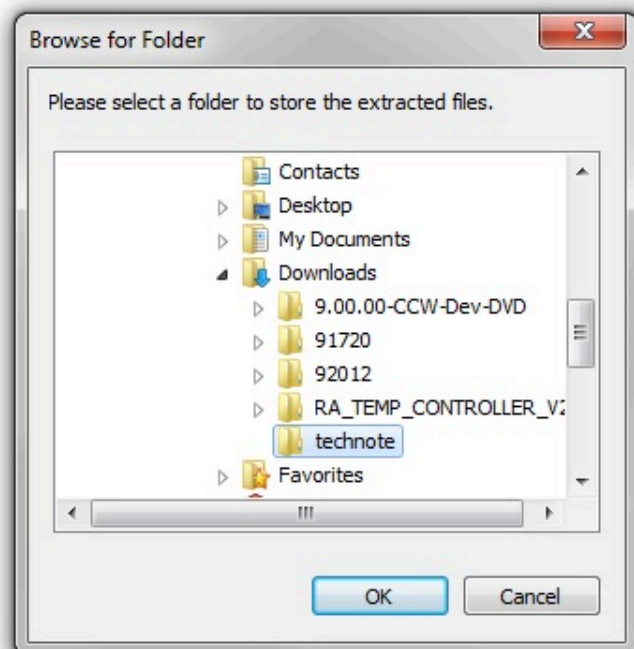
Answer

To use project from Sample Code Library, please do the following:

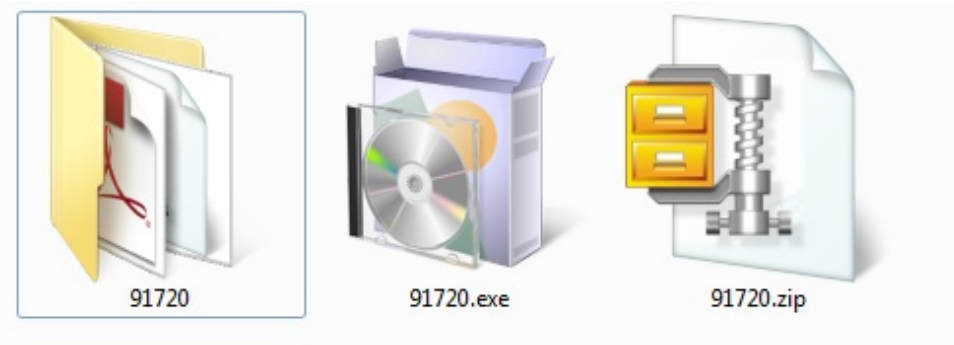
1. Find downloaded file on your hard drive



2. Run .exe file and accept license agreement. Point to the folder where you want to extract project to.



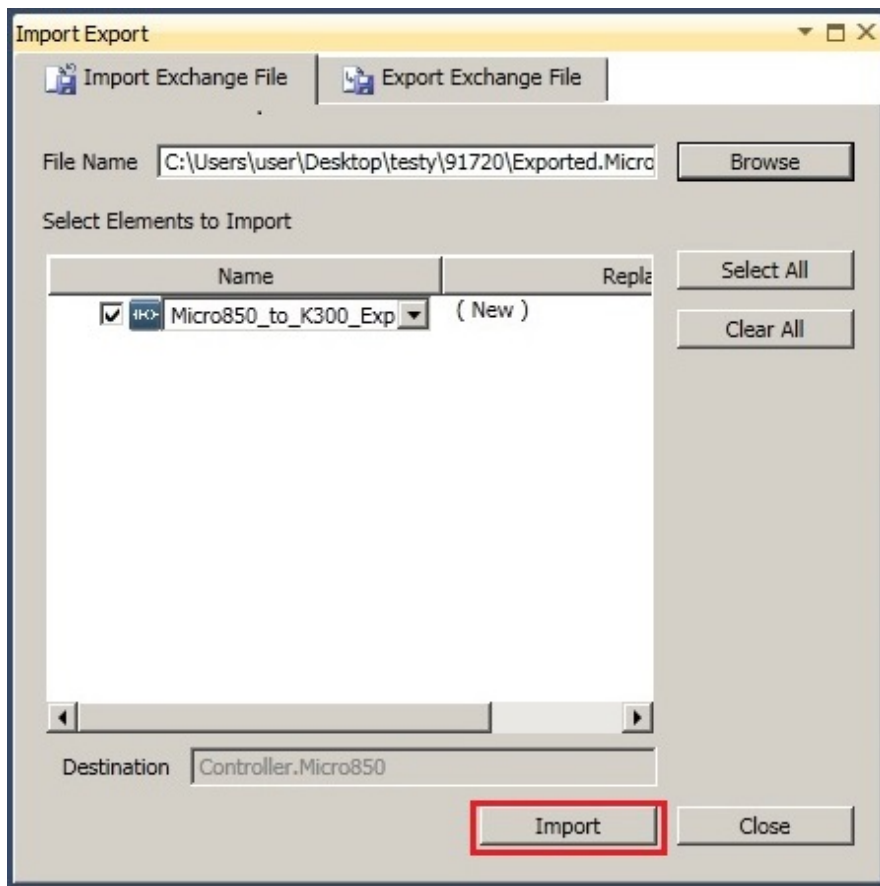
3. Extract .zip file which was created, then new folder will show.



4. In this folder .7z file will be contained, this is the file which has to be imported into the Connected Components Workbench.

Name	Date modified	Type	Size
Exported.Micro850_to_K300_Explicit_Messaging_Examples.Program.7z	2013-09-30 15:26	WinZip File	56 KB
Rockwell Sample Code Download Terms and Conditions.pdf	2013-09-30 15:26	Adobe Acrobat D...	39 KB
Tips for Reading & Writing Kinetix 300 Assemblies from Micro850.doc	2013-09-30 15:26	Microsoft Word 9...	502 KB

5. To import the file, create a new project in CCW (or use existing one).
6. In the **Project Organizer**, *right-click* on the controller icon and browse to *Import -> Import exchange file*. Then browse to .7z file and click **Import**.



7. Sample code will be imported as the new program.

Recently Viewed

Connected
Components
Workbench v21:
Implicit messaging
UDFBs for Kinetix
5100 and PowerFlex
520-s...

Kinetix 5500/5700:
Clearing SAFE FLT
S03 fault

Kinetix 5500/5700:
SAFE FLT S03 with
Hardwired Safe
Torque Off

DISCLAIMER

This knowledge base web site is intended to provide general technical information on a particular subject or subjects and is not an exhaustive treatment of such subjects. Accordingly, the information in this web

site is not intended to constitute application, design, software or other professional engineering advice or services. Before making any decision or taking any action, which might affect your equipment, you should consult a qualified professional advisor.

ROCKWELL AUTOMATION DOES NOT WARRANT THE COMPLETENESS, TIMELINESS OR ACCURACY OF ANY OF THE DATA CONTAINED IN THIS WEB SITE AND MAY MAKE CHANGES THERETO AT ANY TIME IN ITS SOLE DISCRETION WITHOUT NOTICE. FURTHER, ALL INFORMATION CONVEYED HEREBY IS PROVIDED TO USERS "AS IS." IN NO EVENT SHALL ROCKWELL BE LIABLE FOR ANY DAMAGES OF ANY KIND INCLUDING DIRECT, INDIRECT, INCIDENTAL, CONSEQUENTIAL, LOSS PROFIT OR DAMAGE, EVEN IF ROCKWELL AUTOMATION HAVE BEEN ADVISED ON THE POSSIBILITY OF SUCH DAMAGES.

ROCKWELL AUTOMATION DISCLAIMS ALL WARRANTIES WHETHER EXPRESSED OR IMPLIED IN RESPECT OF THE INFORMATION (INCLUDING SOFTWARE) PROVIDED HEREBY, INCLUDING THE IMPLIED WARRANTIES OF FITNESS FOR A PARTICULAR PURPOSE, MERCHANTABILITY, AND NON-INFRINGEMENT. Note that certain jurisdictions do not countenance the exclusion of implied warranties; thus, this disclaimer may not apply to you.